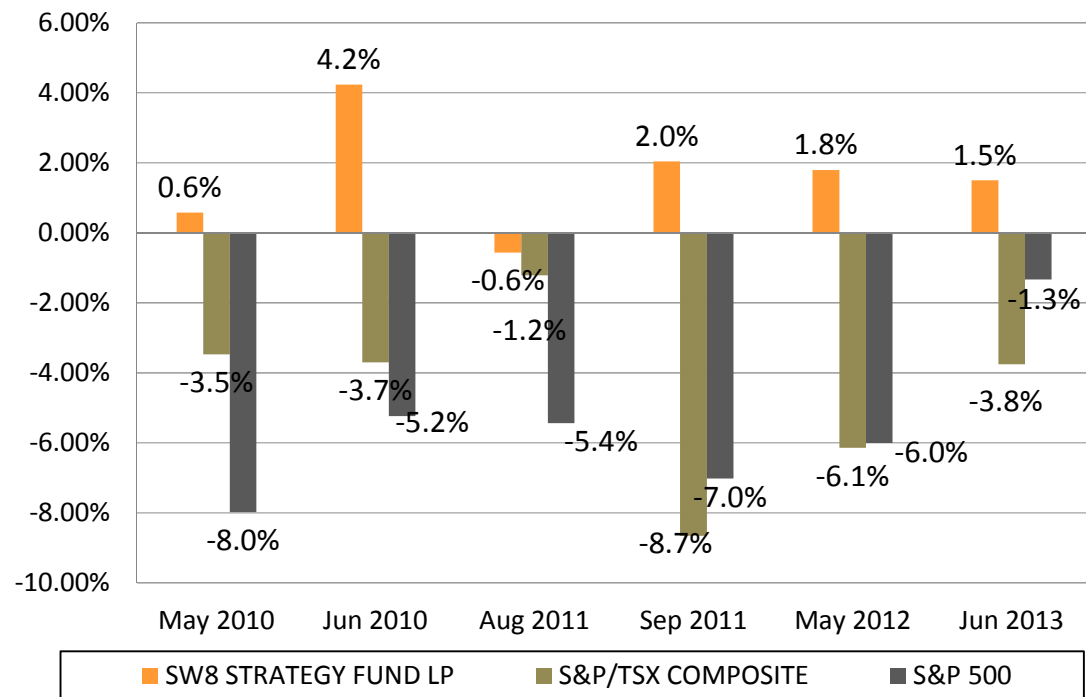




ACTIVE MANAGEMENT FOR VOLATILE MARKETS

SW8 PERFORMANCE IN TOUGH MARKETS

Five Worst Months for the TSX & S&P 500 (Since SW8 launch in April 2010)



IMPORTANT INFORMATION: All performance data is based on the April 2010 lead series of Class B in SW8 Strategy Fund LP. Market indexes are provided for information only and comparisons to indexes have limitations. The S&P/TSX Composite Index and S&P 500 Index are widely-known equity indexes of Canadian and US large-cap companies respectively. Investing in US and Canadian equities long and short is the primary strategy for SW8 but SW8 does not invest in all or necessarily any of the securities that compose the market indexes. Reference to the market indexes does not imply that SW8 will achieve returns similar to the indexes. Source of market index performance is Bloomberg L.P.